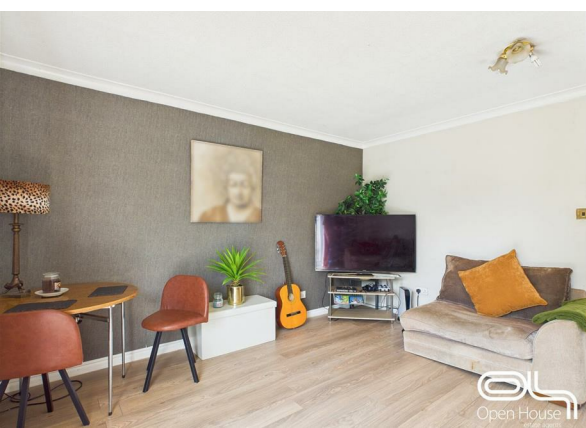
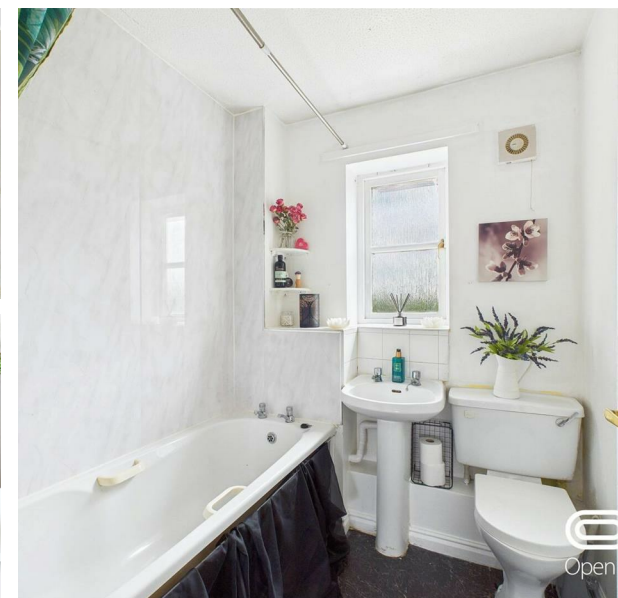


Brooklime Gardens, Stafford, ST16 1XN

Offers Over £170,000

Council Tax Band: B



Located in the quiet and well-regarded Brooklime Gardens area of Stafford, this well-presented two-bedroom semi-detached home offers a superb opportunity for first-time buyers, small families, or anyone seeking a low-maintenance home in a convenient location.

The property, built in 1992, offers approximately 657 square feet of living space and features a light and spacious living room with direct access to a private rear garden—ideal for entertaining or enjoying peaceful evenings.



Open House Staffordshire



Energy Efficiency Rating		
	Current	Potential
Very energy efficient - lower running costs		
(92 plus) A		86
(81-91) B		
(69-80) C		
(55-68) D	64	
(39-54) E		
(21-38) F		
(1-20) G		
Not energy efficient - higher running costs		
England & Wales	EU Directive 2002/91/EC	